

## 系統名 : B6D2F1/Slc

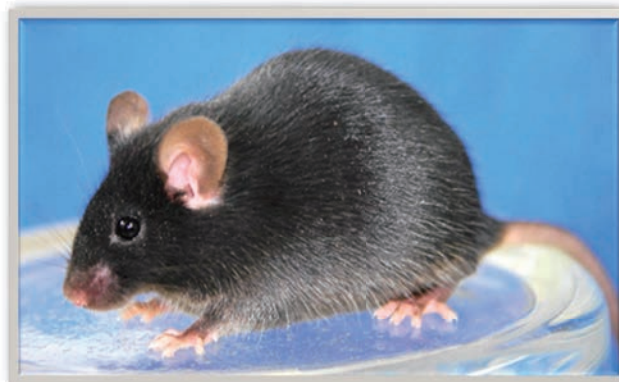
(C57BL/6NCrSlc ♀ × DBA/2CrSlc ♂) F1

### 特徴

- 雑種強勢により強健、環境への適応性が高い
- 両親系統の皮膚、組織、腫瘍等の移植が可能

### 用途

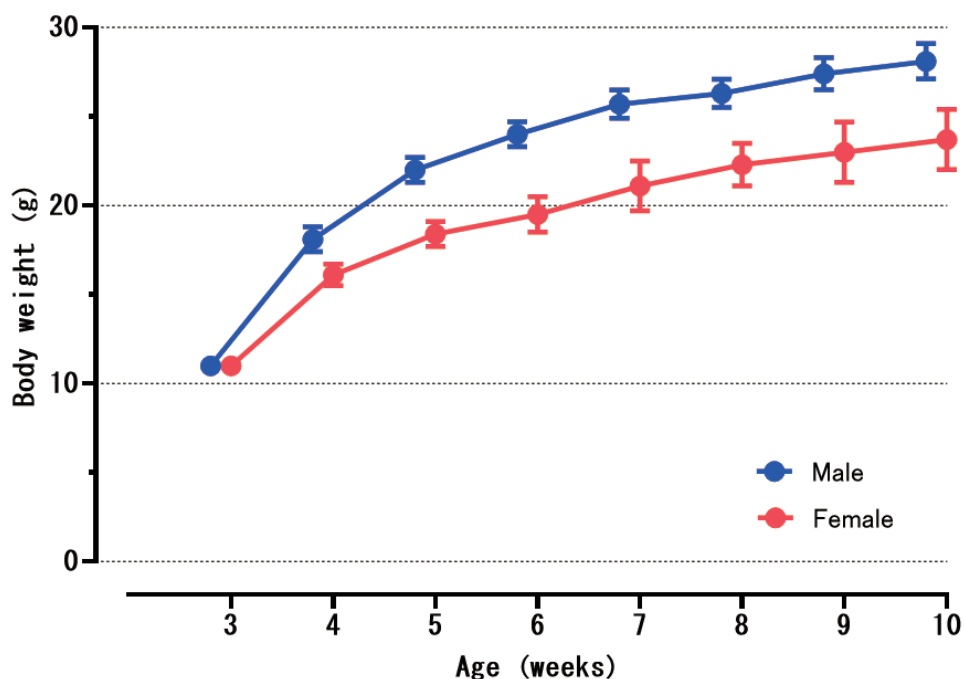
- 制癌剤のスクリーニング
- 遺伝子改変動物の作製等



### 毛色

黒色 (aaBbCC)

## ■ 体重曲線



		Age (weeks)							
		3	4	5	6	7	8	9	10
Male (n=20)	Mean (g)	11.0	18.1	22.0	24.0	25.7	26.3	27.4	28.1
	S.D.	0.3	0.7	0.7	0.7	0.8	0.8	0.9	1.0
Female (n=20)	Mean (g)	11.0	16.1	18.4	19.5	21.1	22.3	23.0	23.7
	S.D.	0.4	0.6	0.7	1.0	1.4	1.2	1.7	1.7

飼料: 5L3R (PMI FEEDS)

## ■血液学的検査

Items	Unit	Male	Female
		10 weeks n=10	10 weeks n=10
WBC	$\times 10^2/\mu\text{L}$	37.4 $\pm$ 12.3	26.2 $\pm$ 7.3
RBC	$\times 10^4/\mu\text{L}$	1013.5 $\pm$ 44.7	955.4 $\pm$ 31.6
HGB	g/dL	14.4 $\pm$ 0.5	13.6 $\pm$ 0.4
HCT	%	47.9 $\pm$ 1.7	45.2 $\pm$ 1.5
MCV	fL	47.3 $\pm$ 0.5	47.4 $\pm$ 0.5
MCH	pg	14.1 $\pm$ 0.2	14.2 $\pm$ 0.1
MCHC	g/dL	29.9 $\pm$ 0.2	30.0 $\pm$ 0.4
PLT	$\times 10^4/\mu\text{L}$	126.0 $\pm$ 11.2	106.4 $\pm$ 7.0

Values are mean  $\pm$  S.D.  
飼料:5L3R (PMI FEEDS)

## ■血液生化学的検査

Items	Unit	Male	Female
		10 weeks n=10	10 weeks n=10
AST	U/L	55.2 $\pm$ 21.5	57.0 $\pm$ 17.6
ALT	U/L	21.8 $\pm$ 3.9	23.3 $\pm$ 7.4
ALP	U/L	312.1 $\pm$ 29.8	472.3 $\pm$ 31.4
ALB	g/dL	3.1 $\pm$ 0.1	3.4 $\pm$ 0.1
TP	g/dL	4.7 $\pm$ 0.2	4.8 $\pm$ 0.2
A/G		1.9 $\pm$ 0.1	2.4 $\pm$ 0.1
GLU	mg/dL	107.8 $\pm$ 16.2	103.1 $\pm$ 18.4
T-BIL	mg/dL	0.08 $\pm$ 0.02	0.06 $\pm$ 0.01
T-CHO	mg/dL	82.6 $\pm$ 8.5	60.7 $\pm$ 8.0
TG	mg/dL	95.1 $\pm$ 20.1	56.4 $\pm$ 11.2
PL	mg/dL	177.7 $\pm$ 15.4	119.9 $\pm$ 13.8
Ca	mg/dL	9.1 $\pm$ 0.1	9.1 $\pm$ 0.1
IP	mg/dL	6.4 $\pm$ 0.4	6.8 $\pm$ 0.7
BUN	mg/dL	21.7 $\pm$ 2.9	19.3 $\pm$ 1.8
CRE	mg/dL	0.08 $\pm$ 0.02	0.06 $\pm$ 0.02
Na	mEq/L	153.6 $\pm$ 1.1	150.7 $\pm$ 0.9
K	mEq/L	5.1 $\pm$ 0.2	4.6 $\pm$ 0.3
Cl	mEq/L	115.8 $\pm$ 1.8	114.9 $\pm$ 1.4

Values are mean  $\pm$  S.D.  
飼料:5L3R (PMI FEEDS)

## ■器官重量

Items	Unit	Male	Female
		10 weeks n=10	10 weeks n=10
Body weight	g	24.9 $\pm$ 1.6	20.0 $\pm$ 1.0
Absolute organ weight			
Brain	g	0.430 $\pm$ 0.014	0.438 $\pm$ 0.017
Heart	g	0.138 $\pm$ 0.012	0.112 $\pm$ 0.007
Lung	g	0.153 $\pm$ 0.012	0.136 $\pm$ 0.005
Kidney (L)	g	0.195 $\pm$ 0.015	0.141 $\pm$ 0.007
(R)	g	0.205 $\pm$ 0.016	0.148 $\pm$ 0.010
Spleen	g	0.073 $\pm$ 0.008	0.085 $\pm$ 0.012
Liver	g	1.020 $\pm$ 0.079	0.867 $\pm$ 0.077
Testis (L)	g	0.090 $\pm$ 0.007	
(R)	g	0.091 $\pm$ 0.008	
Ovary (L)	mg		7.1 $\pm$ 1.7
(R)	mg		6.6 $\pm$ 1.5
Uterus	g		0.111 $\pm$ 0.036
Thymus	g	0.032 $\pm$ 0.005	0.039 $\pm$ 0.006
Salivary gland (L)	g	0.073 $\pm$ 0.006	0.047 $\pm$ 0.005
(R)	g	0.071 $\pm$ 0.008	0.048 $\pm$ 0.003
Relative organ weight			
Brain	g%	1.73 $\pm$ 0.12	2.19 $\pm$ 0.13
Heart	g%	0.55 $\pm$ 0.04	0.56 $\pm$ 0.04
Lung	g%	0.62 $\pm$ 0.05	0.68 $\pm$ 0.03
Kidney (L)	g%	0.78 $\pm$ 0.06	0.71 $\pm$ 0.04
(R)	g%	0.82 $\pm$ 0.07	0.74 $\pm$ 0.03
Spleen	g%	0.29 $\pm$ 0.03	0.42 $\pm$ 0.05
Liver	g%	4.09 $\pm$ 0.20	4.32 $\pm$ 0.20
Testis (L)	g%	0.36 $\pm$ 0.03	
(R)	g%	0.37 $\pm$ 0.04	
Ovary (L)	mg%		35.40 $\pm$ 7.92
(R)	mg%		33.00 $\pm$ 6.69
Uterus	g%		0.55 $\pm$ 0.18
Thymus	g%	0.13 $\pm$ 0.02	0.20 $\pm$ 0.03
Salivary gland (L)	g%	0.29 $\pm$ 0.03	0.24 $\pm$ 0.02
(R)	g%	0.29 $\pm$ 0.03	0.24 $\pm$ 0.02

Values are mean  $\pm$  S.D.  
飼料:5L3R (PMI FEEDS)