

## 系統名：MON/Jms/GbsSlc

### 特徴

- ・後交通動脈が先天的に欠損
- ・高コレステロール飼料で高脂血症になりやすい

### 用途

- ・脳梗塞・脳虚血<sup>1)</sup>
- ・てんかん
- ・コレステロール代謝
- ・*Helicobacter pylori*による胃炎・胃潰瘍<sup>2)</sup>

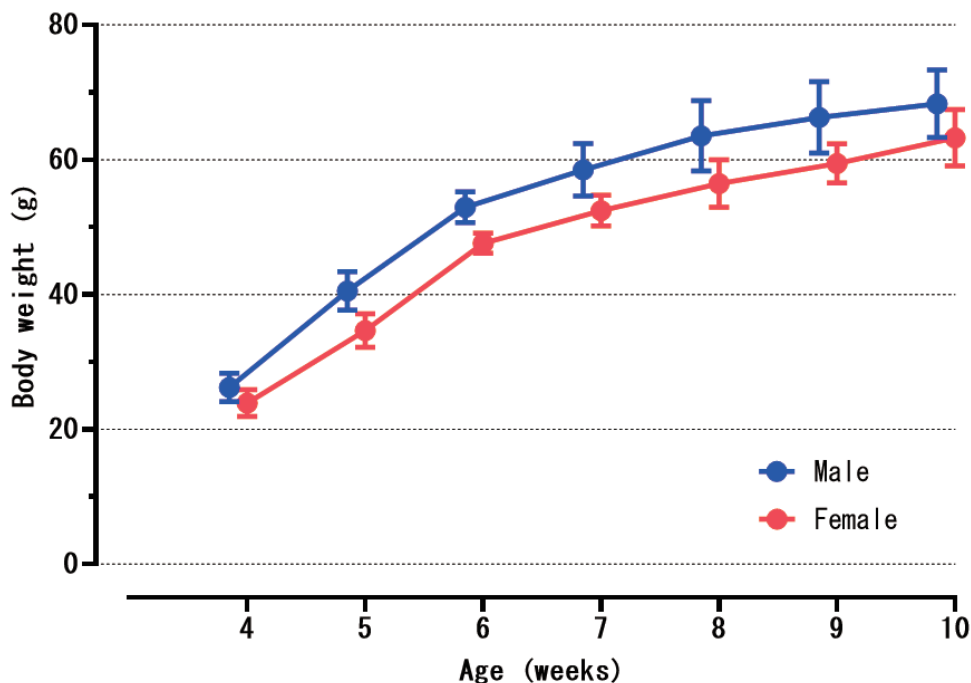


1) Katsuta *et al. Eur J Pharmacol.* 2003. **467**:103-109.  
 2) Osaki *et al. Microb Pathog.* 2012. **53**:12-18.

### 由来

1989年に東京大学医科学研究所より導入

### ■体重曲線



		Age (weeks)							
		4	5	6	7	8	9	10	
Male (n=10)	Mean (g)	26.2	40.5	52.9	58.5	63.6	66.3	68.3	
	S.D.	2.1	2.9	2.3	3.9	5.2	5.3	5.0	
Female (n=10)	Mean (g)	23.9	34.7	47.6	52.5	56.5	59.5	63.3	
	S.D.	2.0	2.5	1.5	2.3	3.5	2.9	4.2	

飼料:ラボMR-A1 (日本農産工業)

## ■血液学的検査

Items	Unit	Male	Female
		10 weeks n=10	10 weeks n=10
WBC	$\times 10^2/\mu\text{L}$	52.0 $\pm$ 25.2	27.0 $\pm$ 3.7
RBC	$\times 10^4/\mu\text{L}$	791.2 $\pm$ 25.3	797.1 $\pm$ 21.1
HGB	g/dL	13.8 $\pm$ 0.4	13.4 $\pm$ 0.3
HCT	%	47.4 $\pm$ 1.3	45.8 $\pm$ 1.2
MCV	fL	59.9 $\pm$ 1.1	57.5 $\pm$ 1.2
MCH	pg	17.4 $\pm$ 0.3	16.8 $\pm$ 0.2
MCHC	g/dL	29.0 $\pm$ 0.5	29.3 $\pm$ 0.4
PLT	$\times 10^4/\mu\text{L}$	84.8 $\pm$ 4.9	72.3 $\pm$ 6.8

Values are mean  $\pm$  S.D.  
飼料: ラボMR-A1 (日本農産工業)

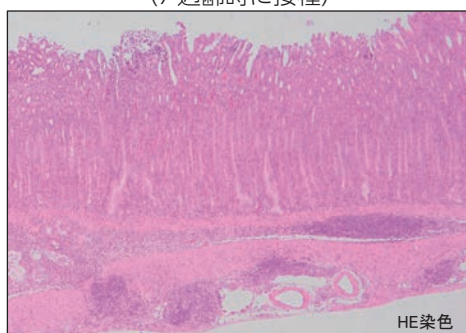
## ■血液生化学的検査

Items	Unit	Male	Female
		10 weeks n=10	10 weeks n=10
AST	U/L	171.3 $\pm$ 13.1	165.0 $\pm$ 11.3
ALT	U/L	59.3 $\pm$ 12.0	52.7 $\pm$ 7.4
ALP	U/L	978.5 $\pm$ 113.9	905.2 $\pm$ 97.0
ALB	g/dL	2.8 $\pm$ 0.1	2.8 $\pm$ 0.1
TP	g/dL	5.4 $\pm$ 0.2	5.3 $\pm$ 0.3
A/G		1.1 $\pm$ 0.1	1.1 $\pm$ 0.1
GLU	mg/dL	78.6 $\pm$ 20.7	99.6 $\pm$ 25.3
T-BIL	mg/dL	0.12 $\pm$ 0.03	0.07 $\pm$ 0.02
T-CHO	mg/dL	87.3 $\pm$ 10.2	89.8 $\pm$ 26.0
TG	mg/dL	29.0 $\pm$ 9.0	74.1 $\pm$ 58.8
PL	mg/dL	124.3 $\pm$ 15.9	119.7 $\pm$ 27.7
Ca	mg/dL	9.1 $\pm$ 0.2	9.3 $\pm$ 0.3
IP	mg/dL	7.3 $\pm$ 1.0	7.7 $\pm$ 0.9
BUN	mg/dL	24.9 $\pm$ 3.0	24.6 $\pm$ 2.4
CRE	mg/dL	0.20 $\pm$ 0.02	0.21 $\pm$ 0.02
Na	mEq/L	154.1 $\pm$ 2.8	156.0 $\pm$ 3.0
K	mEq/L	3.4 $\pm$ 0.1	3.4 $\pm$ 0.3
Cl	mEq/L	114.0 $\pm$ 3.2	114.7 $\pm$ 3.8

Values are mean  $\pm$  S.D.  
飼料: ラボMR-A1 (日本農産工業)

## ■病理組織像

*Helicobacter pylori* 感染8週後の胃  
(7週齢時に接種)



HE染色

リンパ濾胞の形成を伴う炎症性病変が粘膜下層まで観察された。

## ■器官重量

Items	Unit	Male	Female
		10 weeks n=10	10 weeks n=10
Body weight	g	65.2 $\pm$ 4.6	59.6 $\pm$ 3.4
Absolute organ weight			
Brain	g	0.996 $\pm$ 0.025	0.982 $\pm$ 0.025
Heart	g	0.276 $\pm$ 0.023	0.244 $\pm$ 0.016
Lung	g	0.307 $\pm$ 0.019	0.300 $\pm$ 0.034
Kidney (L)	g	0.268 $\pm$ 0.023	0.255 $\pm$ 0.022
(R)	g	0.272 $\pm$ 0.021	0.253 $\pm$ 0.022
Spleen	g	0.063 $\pm$ 0.008	0.068 $\pm$ 0.011
Liver	g	2.140 $\pm$ 0.252	2.069 $\pm$ 0.247
Testis (L)	g	0.399 $\pm$ 0.063	
(R)	g	0.405 $\pm$ 0.060	
Ovary (L)	mg		10.3 $\pm$ 5.3
(R)	mg		13.6 $\pm$ 7.9
Uterus	g		0.157 $\pm$ 0.076
Adrenal (L)	mg	16.6 $\pm$ 1.5	15.5 $\pm$ 1.2
(R)	mg	16.3 $\pm$ 2.4	14.6 $\pm$ 1.4
Thymus	g	0.064 $\pm$ 0.015	0.066 $\pm$ 0.019
Pituitary	mg	2.0 $\pm$ 0.7	2.8 $\pm$ 0.8
Thyroid gland	mg	8.0 $\pm$ 1.9	6.9 $\pm$ 1.2
Salivary gland (L)	g	0.077 $\pm$ 0.006	0.066 $\pm$ 0.007
(R)	g	0.077 $\pm$ 0.007	0.067 $\pm$ 0.006
Relative organ weight			
Brain	g%	1.53 $\pm$ 0.09	1.65 $\pm$ 0.07
Heart	g%	0.42 $\pm$ 0.02	0.41 $\pm$ 0.02
Lung	g%	0.47 $\pm$ 0.03	0.50 $\pm$ 0.03
Kidney (L)	g%	0.41 $\pm$ 0.03	0.43 $\pm$ 0.03
(R)	g%	0.42 $\pm$ 0.03	0.43 $\pm$ 0.02
Spleen	g%	0.10 $\pm$ 0.01	0.11 $\pm$ 0.01
Liver	g%	3.27 $\pm$ 0.20	3.47 $\pm$ 0.26
Testis (L)	g%	0.62 $\pm$ 0.11	
(R)	g%	0.62 $\pm$ 0.11	
Ovary (L)	mg%		17.40 $\pm$ 9.32
(R)	mg%		22.62 $\pm$ 12.54
Uterus	g%		0.26 $\pm$ 0.12
Adrenal (L)	mg%	25.53 $\pm$ 2.79	26.05 $\pm$ 1.86
(R)	mg%	25.07 $\pm$ 3.28	24.58 $\pm$ 2.32
Thymus	g%	0.10 $\pm$ 0.03	0.11 $\pm$ 0.04
Pituitary	mg%	3.09 $\pm$ 1.05	4.63 $\pm$ 1.23
Thyroid gland	mg%	12.23 $\pm$ 2.91	11.59 $\pm$ 1.81
Salivary gland (L)	g%	0.12 $\pm$ 0.01	0.11 $\pm$ 0.01
(R)	g%	0.12 $\pm$ 0.01	0.11 $\pm$ 0.01

Values are mean  $\pm$  S.D.  
飼料: ラボMR-A1 (日本農産工業)